

DEPARTMENT 10 – GARDEN/AG PRODUCTS – J (OPEN & JUNIOR SHOW COMBINED)

NEW SECURITY MEASURES WILL BE IN PLACE FOR THE HEART OF ILLINOIS FAIR. These measures are to assist us in creating a safer fair for all patrons, exhibitors, guests and performers. Please see page 1 of the General Rules for additional details. YOUR HELP IS NEEDED TO MAKE OUR FAIR A SAFE, FUN PLACE TO BE. THANK YOU.

REGULAR ENTRY DEADLINE: JULY 1, 2010

ENTRY FEE: \$ .75  
EXHIBITOR TICKETS: \$12.00 FOR (5) DAY

THE GARDEN/AG PRODUCTS IS MOVING UP ONE WEEKDAY IN 2010. ALL ENTRIES ARE TO BE BROUGHT ON **WEDNESDAY**

ITEM/S ACCEPTANCE DATE & TIME: **WEDNESDAY, JULY 14, 2010**; BETWEEN 7:00 & 9:30 A.M.  
JUDGING DATE & TIME: **WEDNESDAY, JULY 14, 2010** - 10:00 A.M.  
BUILDING FOR ITEM/S DELIVERY: FLORICULTURE BUILDING

PREMIUMS OFFERED: \$1,417.00 (OPEN SHOW)  
PREMIUMS OFFERED: \$ 145.00 (JUNIOR SHOW)

CO-SUPERINTENDENT: .....BETTY SUMMER .....(309) 745-3446  
CO-SUPERINTENDENT: .....KEVIN & DEBRA WADE .....(309) 745-8115 (email) princess\_86@verizon.net  
CO-SUPERINTENDENT: .....JANET HART .....(309) 446-3004 (email)harthoney@msn.com

DEPARTMENT AND HEART OF ILLINOIS FAIR GENERAL RULES

1. Please refer to the GENERAL RULES section in the front of the premium book.
2. Entries close July 1, 2010, for the regular entry deadline. All entries by mail must be postmarked not later than midnight, July 1, 2010, and must be accompanied by full entry fee.
3. Fees. Remittance of entry fee of \$.75 for each entry and \$12.00 for an exhibitor's ticket for (5) days must accompany all applications for entry. All exhibitors must purchase at least (one) \$12.00 exhibitor ticket. (Maximum of 2)
4. Entry tags shall be fastened securely to each article to be exhibited. **EACH EXHIBIT TAG MUST HAVE PLANT VARIETY NAME (if applicable) LISTED ON THE TAG TO BE ELIGIBLE FOR A BLUE RIBBON.** All grains, seeds and vegetables competing for premiums must be exhibited by the producer and must be grown in the State of Illinois.
5. Only one sample of any farm product grown by any exhibitor may be entered for each lot number.
6. All exhibitors will be excluded from the exhibit section while judging is in progress. It will be the responsibility of the superintendent in charge to see that this rule is abided by.
7. Exhibits will be released between 1:00 and 3:00 p.m., Sunday, July 18, 2010.
8. Any person entering the Junior Section will include 2010 high school graduates and under. Vegetables grown and **basket arrangements** entered in the junior section must be done by the junior exhibitor.
9. Please use the SAME entry form for both Open & Junior entries.
10. Entry tags will be mailed to you as soon as your entry is processed. If for some reason you do not receive them by the date you are to bring your item/s, **please call the office** as we may be holding them for you to pick-up when you bring your articles. Do not assume that we have not received your entry; please call to check on your entry status.

**CLASS A - GRAINS & SEEDS**

**PREMIUM AWARDS**

1st	2nd	3rd
\$10.00	\$8.00	\$6.00

To be displayed in ONE GALLON, WIDE-MOUTH GLASS JARS, WITH LIDS, labeled with variety, jars to be furnished by exhibitor. **ANY ENTRIES USING SMALL MOUTH JARS WILL NOT BE JUDGED.**

**Lot**

1. Wheat, any variety
2. Oats, any color
3. Clover Seed, any variety
4. Soybeans, any color
5. Rye
6. Grain, any other

**CLASS B - CORN**

**PREMIUM AWARDS**

1st	2nd	3rd
\$25.00	\$20.00	\$15.00

All entries must be accompanied by the hybrid number and variety.  
All entries must be of a quality healthy seed able to be germinated and show no insect damage.

**Lot**

1. 10 ears Pioneer corn
2. 10 ears any other variety of corn
3. Tallest Stalk of Corn, shown with roots in tub or bucket

1st	2nd	3rd
\$10.00	\$8.00	\$6.00

**Lot**

4. Best Single Ear
5. Best Longest Ear
6. Odd or Unusual Ear
7. 5 ears Popcorn
8. ½ GALLON Shelled Popcorn
9. 5 ears Indian corn, bunched (tied together)
10. 1 GALLON Shelled Corn

**CLASS C - FORAGES**

**PREMIUM AWARDS**

1st	2nd	3rd
\$10.00	\$8.00	\$6.00

Hay flake will be judged on feedable qualities to livestock. Hay flake must be from 2010 hay crop and must have been run through mechanical baler. Must be shown in a box suitable for size. **FORAGES MUST BE CURED AT LEAST THREE DAYS.**

**Lot**

1. 4" Flake Alfalfa Hay - forage quality
2. 4" Flake Clover Hay - forage quality
3. 4" Flake Mixed Hay - forage quality

**CLASS D - VEGETABLES**

For instructions on the proper procedure for exhibiting & displaying vegetables & fruits please obtain or refer to The U. of I., Cooperative Extension Flyer on "Exhibiting vegetables you can find this at <http://my.extension.uiuc.edu/documents/257072011071107/MJ0800a.pdf> or at your county Cooperative Extension Service. Bunches means cut off stem 4" to 6" tied together in a bunch, except rhubarb lots. Stem on means length appropriate for specimen. All vegetable entries shall be displayed on a white paper 10" plate. Commercial Exhibitors prohibited.

**★★Entry tag shall be fixed to plate and show plant variety name★★**

**PREMIUM AWARDS**

1st	2nd	3rd
\$5.00	\$3.00	\$2.00

**Lot**

1. Cucumbers, (plate of 5 best slicing) with stem
2. Cucumbers, pickling (plate of 5) with stem
3. Mature dry onions, (plate of 5)
4. Beans, green **MOVED TO CLASS E, Lot 1**
5. Beans, any other, (plate of 12 pods)
6. Beets, bunched, (bunch of 5)
7. Broccoli, (plate of 1 head, primary)
8. Cauliflower, (plate of 1 head)
9. Eggplant, (plate of 3)
10. Cabbage, round head, (plate of 1) with green wrapper leaves
11. Cabbage, any other, (plate of 1) with wrapper leaves
12. Cabbage, largest head (plate of 1) with wrapper leaves
13. Carrots, bunched, (bunch of 5)
14. Kohlrabi, (plate of 5)
15. Leaf lettuce, 1 entire bunch
16. Greens, collard, mustard, etc., 3 stalks
17. Onions, green, bunched, (bunch of 12)
18. Potatoes, (plate of 5)
19. Rhubarb, 5 stalks
20. Rhubarb, 3 longest stalks
21. Peppers, Mango Bell type, (plate of 5) with stem
22. Peppers, small fruited, chili, cayenne, etc., (plate of 12) with stem
23. Peppers, yellow Hungarian, banana, etc., (plate of 5) with stem
24. Squash, Zucchini, (plate of 3 under 8" long) with stem
25. Squash, summer, (plate of 3) with stem
26. Swiss chard, 3 leaves
27. Sweet corn **MOVED TO CLASS E, Lot 2**
28. Tomatoes, slicing, (plate of 5 ripe or turning red) with stem
29. Salad tomatoes, (plate of 12) with stem
30. Turnips, (plate of 5) with stem
31. Any other variety of vegetables, (1 large specimen or plate of 3 smaller items)
32. Largest Tomato, with stem
33. Largest Zucchini Squash (1) with stem
34. Spinach, entire bunch
35. Character Class (Create a Character using vegetables from your garden)
36. Decorate a Zucchini-Anything goes!

**PREMIUM AWARDS**

1st	2nd	3rd
\$20.00	\$15.00	\$10.00

**& Trophy**

37. Bushel Basket Display of Fresh Vegetables  
To consist of a plain or colored bushel basket, tipped on side, containing a well balanced assortment of not less than seven nor more than ten vegetables from the family garden. Decorative material such as asparagus fern or other material not to count as a vegetable.

♥ **TROPHY SPONSORED BY HOPEWELL GRANGE, WASHINGTON, IL**

**PREMIUM AWARDS**

1st	2nd	3rd
\$10.00	\$6.00	\$4.00

38. Basket Display of Fresh Vegetables  
To consist of any type of basket tipped on side to show display of not less than 5 vegetables from the family garden. Decorative material such as asparagus fern or other material not to count as a vegetable.



**CLASS E – SPECIAL TRIBUTE  
PREMIUM AWARDS**

1st	2nd	3rd
\$25.00	\$15.00	\$10.00

**Lot**

1. Green Beans, Round or Oval pod (plate of 12)

In Memory of **Gladys Gilles** who spent many hot summer days picking and canning the beans she had planted in order to feed her family through the winter months. Sponsored by her daughter, Janet Hart.

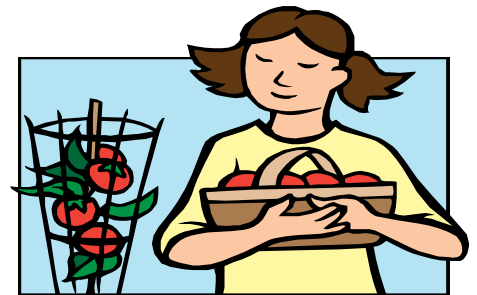


2. Sweet corn, yellow or white, husks on, 5 ears. In memory of **John Sumner**, who for nearly 50 years was Superintendent of the Ag Products. Sponsored by his wife Betty and family—Terry Summer, Kevin and Debra Wade and children.

3. Tomato minimum of 5 with stem, any variety. With a display relating to the entry (eg. heirlooms, diseases/insects, culture, uses, health benefits) in order to educate the public. There are no restrictions to type or size of the display.

Judging criteria: Tomatoes 50%--Display 50%

Sponsored by Patricia Middleton, Peoria County Master Gardener with the U of I Extension



**CLASS F - HERBS  
PREMIUM AWARDS**

1st	2nd	3rd
\$3.00	\$2.00	\$1.00

A standard bundle for display shall be securely tied and not less than one half (½) inch nor more than two (2) inches in diameter, at center of stem. **ATTACH ENTRY TAG TO HERB BUNDLE.** Herbs will be judged for scent, attractiveness, and quality. Rodale Press's "Encyclopedia of Herbs" and Garden Way's "Herbs the Year Round" are good sources for proper identification of plants.

**Lot**

1. Basil – sweet, no flower
2. Basil - other
3. Borage
4. Chive - onion
5. Chive - garlic
6. Cilantro - (coriander)
7. Dill - without seed
8. Dill - with seeds
9. Fennel
10. Feverfew, stems trimmed to approx. 10-12"
11. Garlic (no elephant accepted) (3 heads)
12. Horehound
13. Lavender
14. Lemonbalm
15. Oregano - culinary (Greek, etc.)
16. Parsley - curly
17. Parsley - flatleaf
18. Mint - Any Mertha sp.
19. Rosemary
20. Sage - culinary - Salvia Officianalis
21. Scented geraniums (rose)
22. Scented geraniums (citrus)
23. Sorrel - French
24. Sweet Marjoram
25. Tansy, stems trimmed to approx. 10-12"
26. Tarragon - French
27. Thyme, culinary
28. Yarrow, golden
29. Yarrow, any other color
30. Best Display of herbs, minimum of 5, must include list of herbs on back of entry tag



**CLASS G - HONEY  
PREMIUM AWARDS**

	1st	2nd	3rd
	\$25.00	\$15.00	\$10.00

**Lot**

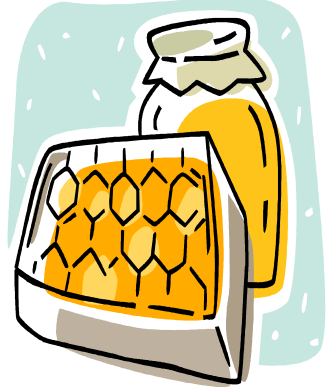
1. Extracted Honey--three 1 lb. jars

Sponsored by the **Heart of Illinois Beekeepers Association**

c/o Janet Hart, Secretary- [harthoney@msn.com](mailto:harthoney@msn.com)

**Judging Criteria:**

Density	15
Freedom from Crystals	20
Cleanliness and freedom from foam	30
Uniformity of color	10
Flavor	10
Container appearance	5
Accuracy and uniformity of fill	<u>10</u>
Total	100



2. Cut Comb Honey—3pieces in plastic boxes

Sponsored by **Dadant & Sons Beekeeping Supply, Hamilton, IL**

<http://www.dadant.com>

**Judging Criteria:**

Neatness and uniformity of cut, absence of liquid honey	20
Absence of watery cappings, uncapped cells and pollen cells	20
Cleanliness of product	20
Uniformity of appearance	15
Uniformity of weight	15
Total weight of entry	<u>10</u>
Total	100



**PREMIUM AWARDS**

	1st	2nd	3rd
	\$8.00	\$6.00	\$4.00

**Lot**

3. Chunk Style—one 1 p. jar

**Judging Criteria:**

Neatness of cut	20
Absence of watery cappings, uncapped cells and pollen cells	20
Cleanliness of product	20
Uniformity of appearance	20
Density	15
Flavor	<u>5</u>
Total	100

**1st (First Place Only)**

**10-Frame multi-Duty Hive Top Feeder (\$25 value)**

4. Beeswax –not less than 4 ounces (1/4 pound)

Can be any type of beeswax product e.g. candles or molded design, not to include any coloring or fragrances.

Sponsored by **Brushy Mountain Bee Farm**, Moravian Falls, North Carolina

<http://www.brushymountainbeefarm.com>

**Judging Criteria:**

Color (straw to canary yellow)	25
Cleanliness and aroma	25
Neatness of workmanship	25
Overall attractiveness	<u>25</u>
Total	100



**CLASS H – SCARECROW—First Place Only  
PREMIUM AWARDS**

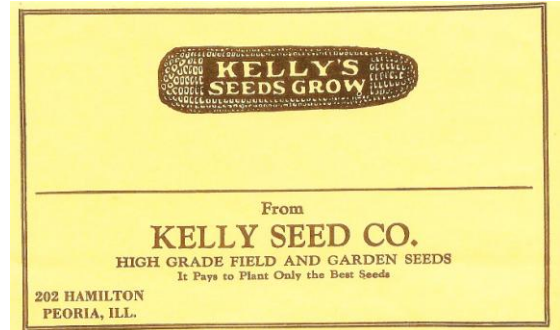
**1st**

**\$25.00 GIFT CARD FROM KELLY'S SEED CO.**

**Lot**

1. Make a **SCARECROW**  
**Must be self-supported.**

This class will be judged by the public at the  
2010 Heart of Illinois Fair Department of Ag Show.



**GARDEN/AG PRODUCTS (JUNIOR SHOW)**

**CLASS I - VEGETABLES, GRAINS, SEEDS**

**PREMIUM AWARDS**

1st	2nd	3rd
\$5.00	\$3.00	\$2.00

**Lot**

1. Beans, green pod, round or oval type, (plate of 12 pods)
2. Beets, bunched, (bunch of 5)
3. Cabbage, one head. (plate of 1)
4. Cucumbers, (plate of 5 best slicing)
5. Carrots, bunched, (bunch of 5)
6. Peppers, Bell type, (plate of 5)
7. Potatoes, (plate of 5)
8. Tomatoes, (plate of 5 ripe or turning red)
9. Sweet Corn, 5 ears, yellow or white
10. Mature dry onions over 4" diameter, (plate of 5)
11. Turnips, (plate of 5)
12. Largest Zucchini Squash (1) with stem
13. Tomatoes, salad, (plate of 12)

**PREMIUM AWARDS**

1st	2nd	3rd
\$7.00	\$5.00	\$3.00

**& Trophy**

14. Basket Display of Fresh Vegetables

To consist of plain or decorated basket tipped on side to show display of 5 vegetables from a family garden. Decorative material such as asparagus fern or other material does not count as a vegetable.

♥ **TROPHY SPONSORED BY HOPEWELL GRANGE, WASHINGTON, IL**